

For Lease
±1,084-6,216 SF
Office Space



Cypress Plaza

6365 NW 6th Way, Fort Lauderdale, FL 33309

Property Features

- Recently upgraded three-story office building in Corporate Park at Cypress Creek
- Excellent location with easy access to highways and public transit
- Nearby businesses include Chili's, Starbucks, LA Fitness, Office Depot, Chipotle, CVS and more
- Near Fort Lauderdale Executive Airport

For more information:

Lesley Sheinberg, Managing Director

lsheinberg@mhcreal.com

C: 561 254 7810 | O: 561 471 8000

Key Highlights



Fully renovated first-class office building



Adjacent to I-95 and minutes from the Florida Turnpike



Nearby numerous retail, dining, and lifestyle amenities



Ample parking



FOR LEASE: CYPRESS PLAZA, FORT LAUDERDALE

±1,084-6,216 SF Office Space Near I-95

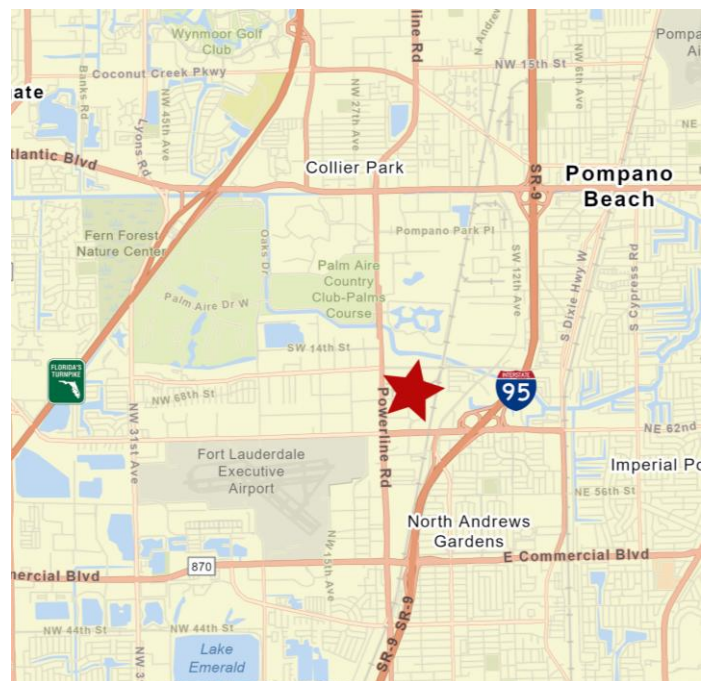


Available Space:	Suite 200: 6,216 SF Suite 210: 4,265 SF Suite 230: 1,084 SF Suite 350: 5,106 SF
Rental Rate:	\$17.50/SF NNN \$13.50/SF CAM ; includes janitorial; tenant pays separately metered electric
Parking:	Ample parking (4:1,000)

For more information:

Lesley Sheinberg, Managing Director
lsheinberg@mhcreal.com

C: 561 254 7810 | O: 561 471 8000



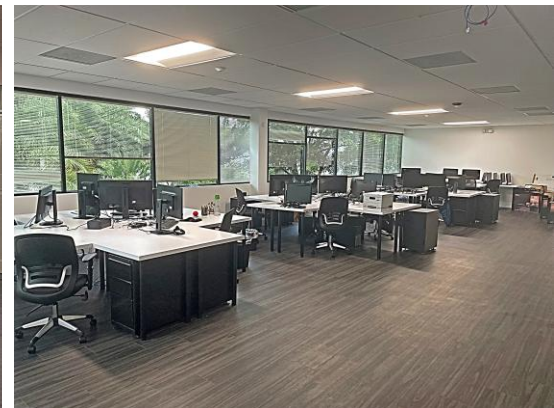
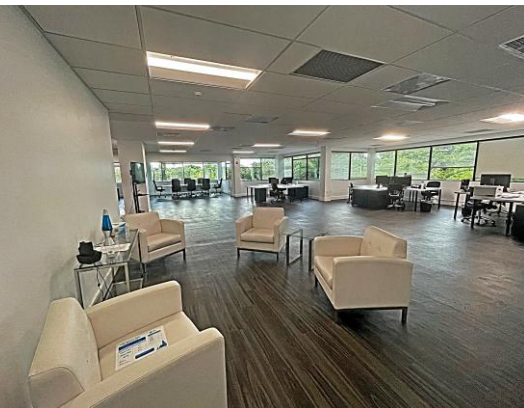
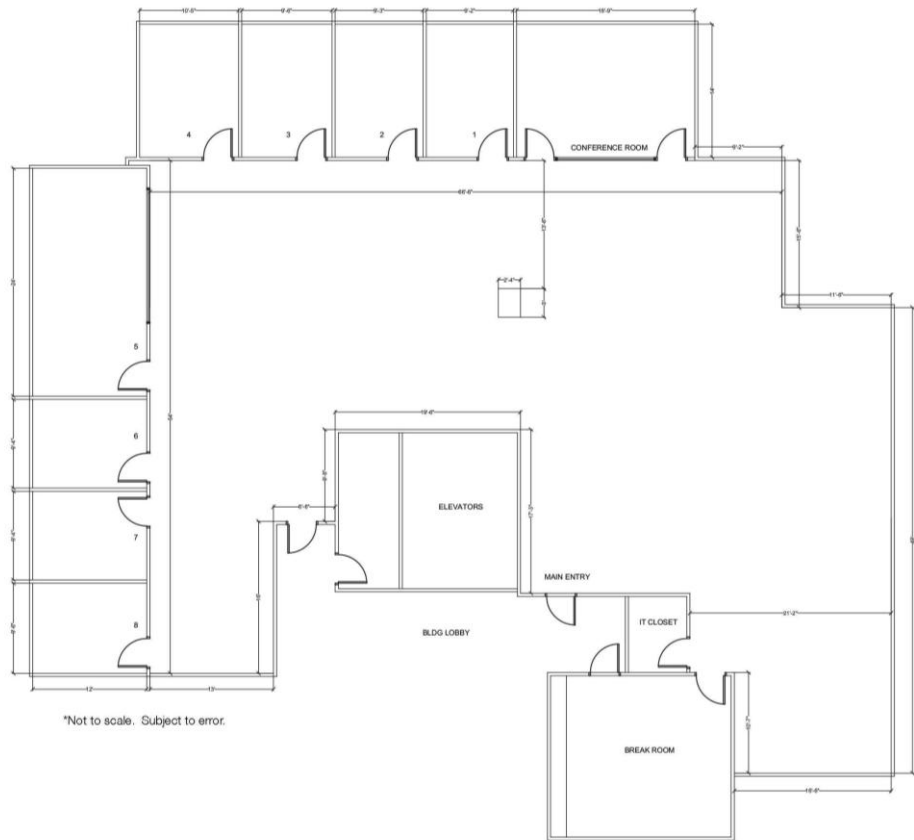
FOR LEASE: CYPRESS PLAZA, FORT LAUDERDALE

Modern & Spacious Office Suite Available

Suite 200 ±6,216 SF

This suite offers versatile office space designed to accommodate modern business needs, providing functionality and convenience for growing teams.

- Collaborative layout
- Abundant natural light
Spacious open work area
Private offices
- Dedicated break room
- IT closet
- Easy access to the building's lobby and elevators
- Available June 2025

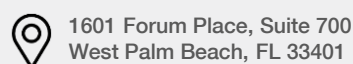
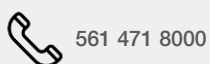


Lesley Sheinberg, Managing Director

lsheinberg@mhcreal.com

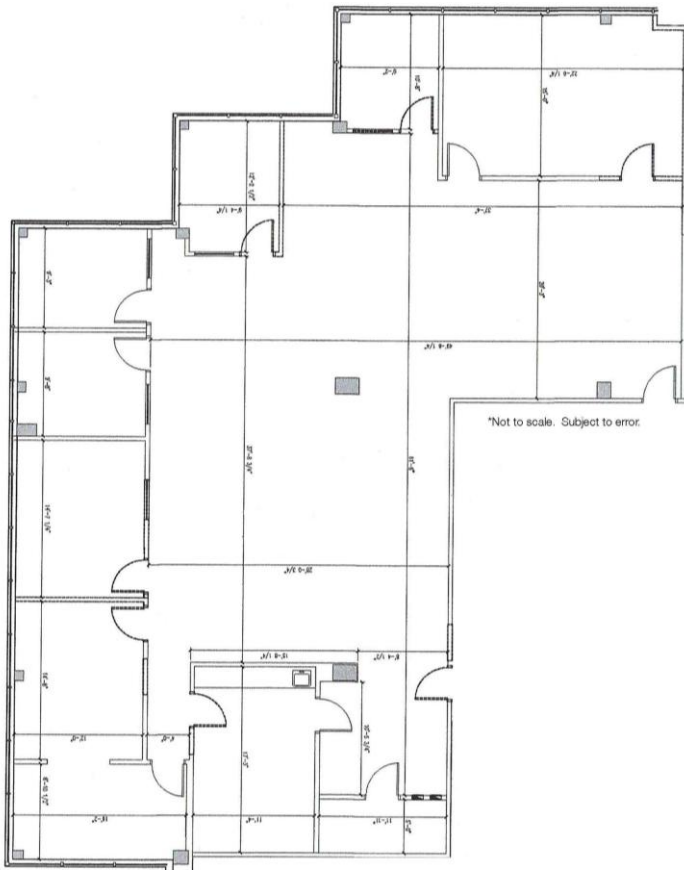
C: 561 254 7810 | O: 561 471 8000

NO WARRANTY OR REPRESENTATION, EXPRESS OR IMPLIED, IS MADE AS TO THE ACCURACY OF THE INFORMATION CONTAINED HEREIN, AND THE SAME IS SUBMITTED SUBJECT TO ERRORS, OMISSIONS, CHANGE OF PRICE, OR WITHDRAWAL WITHOUT NOTICE.



FOR LEASE: CYPRESS PLAZA, FORT LAUDERDALE

Bright, Modern & Business-Ready



Suite 210 ±4,265 SF

This modern, move-in ready space is designed for productivity and flexibility.

- Bright, open layout with floor-to-ceiling windows
- Glass wall accents
- Private offices & open workspaces
- Conference room
- Break area with kitchenette



**VIEW
3D TOUR!**



Lesley Sheinberg, Managing Director
lsheinberg@mhcreal.com
C: 561 254 7810 | O: 561 471 8000

Call today for more information!



561 471 8000