



## Gardens Pointe

3507 Kyoto Gardens Drive  
Palm Beach Gardens, FL

### Property Features

- Beautifully appointed lobby
- Spaces feature: high-end finishes, kitchenettes, hurricane rated impact glass, and fiber optics
- Ample free parking
- ¼ mile from I-95 and two miles east of the Florida Turnpike
- Walking distance to Gardens Mall and Downtown at the Gardens, minutes from Legacy Place



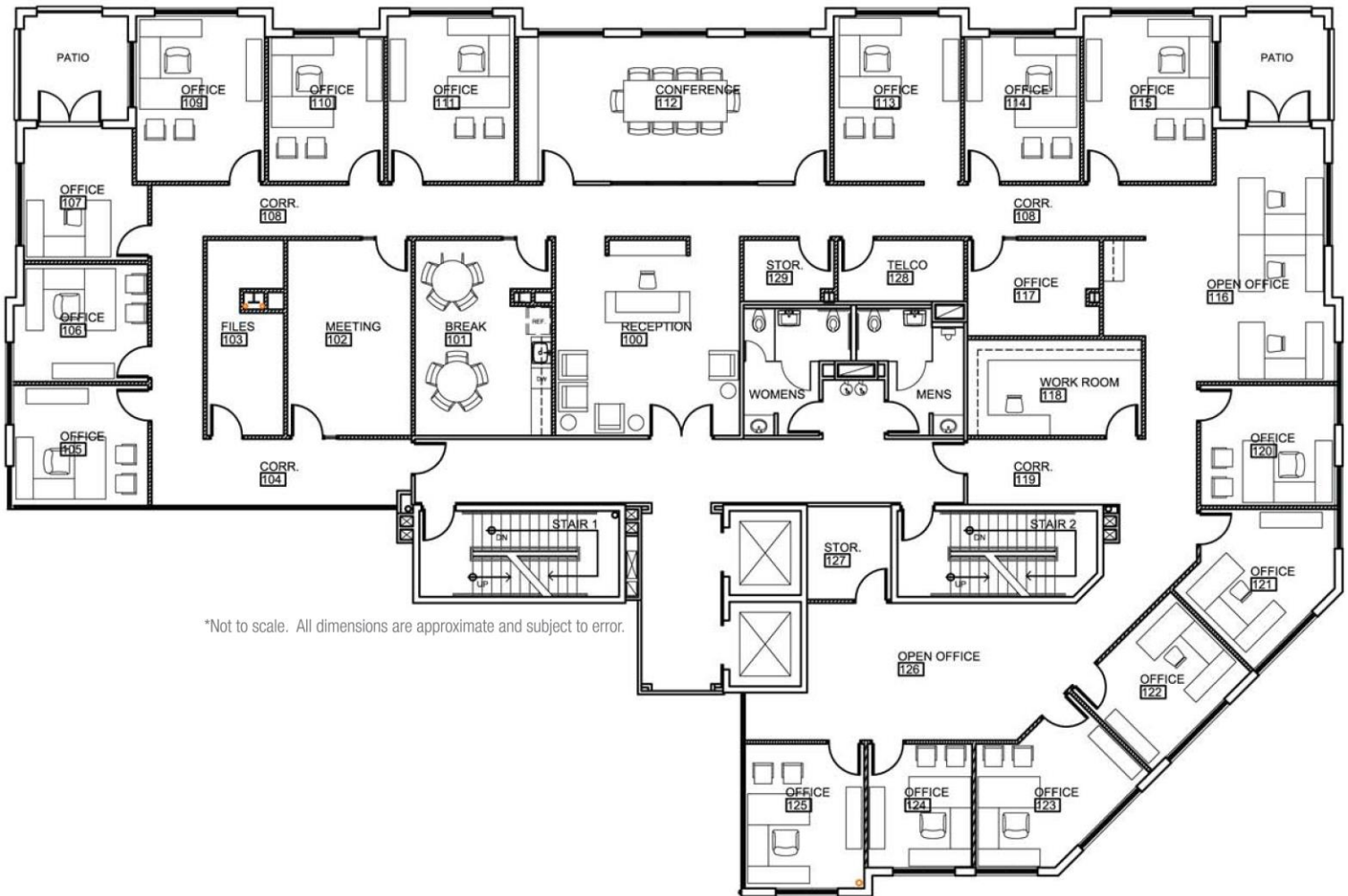
**Jason L. Sundook, SIOR**

Principal  
jsundook@mhcreal.com

# Gardens Pointe

3507 Kyoto Gardens Drive,  
Palm Beach Gardens, FL

For Lease  
±4,000-7,245 SF  
Office Space



**Jason L. Sundook, SIOR**

Principal  
jsundook@mhcreal.com

NO WARRANTY OR REPRESENTATION, EXPRESS OR IMPLIED, IS MADE AS TO THE ACCURACY OF THE INFORMATION CONTAINED HEREIN, AND THE SAME IS SUBMITTED SUBJECT TO ERRORS, OMISSIONS, CHANGE OF PRICE, RENTAL OR OTHER CONDITIONS, PRIOR SALE, LEASE OR FINANCING, OR WITHDRAWAL WITHOUT NOTICE, AND OF ANY SPECIAL LISTING CONDITIONS IMPOSED BY OUR PRINCIPALS NO WARRANTIES OR REPRESENTATIONS ARE MADE AS TO THE CONDITION OF THE PROPERTY OR ANY HAZARDS CONTAINED THEREIN ARE ANY TO BE IMPLIED.

1601 Forum Place Suite 200  
West Palm Beach FL 33401  
561 471 8000  
[mhcreal.com](http://mhcreal.com)